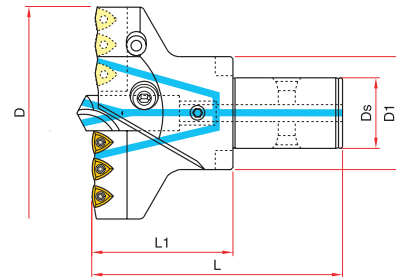
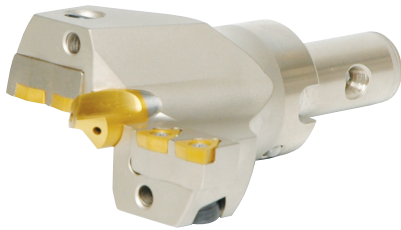


- 바디표면을 특수표면처리하여 내마모성 및 수명이 길어졌습니다.
- 더욱 안정된 설계로 제작되어 MXD보다 드릴링이 안정되어 경제성이 뛰어납니다.
- MX Modular system으로 원하는 가공길이 조절 가능.



● MX MODULAR SHANK Type

CODE NO	D	Ds	D1	L1	L	Pilot drill	Cartridge	Insert	Screw	Driver
VMD-045050	45- 50	13	28	50	85	PLD-1035	VMC-045050N/T	WC..030204	TSB-22045	TXL-6
VMD-050055	50- 55	13	28	50	85	TiN-H	VMC-050055N/T			
VMD-055060	55- 60	16	32	60	100		VMC-055060N/T	WC..040204	TSB-25055	
VMD-060065	60- 65	16	32	60	100	PLD-1238	VMC-060065N/T			
VMD-065070	65- 70	16	32	60	100	TiN-H	VMC-065070N/T	WC..050308	TSB-30070	TXL-8
VMD-070075	70- 75	22	40	70	115		VMC-070075N/T			
VMD-075080	75- 80	22	40	70	115		VMC-075080N/T			
VMD-080085	80- 85	22	40	70	115	PLD-1645	VMC-080085N/T			
VMD-085090	85- 90	27	48	70	120	TiN-H	VMC-085090N/T	WC..06T308	TSB-35090	TXL-15
VMD-090095	90- 95	27	48	70	120		VMC-090095N/T			
VMD-095100	95-100	27	48	70	120		VMC-095100N/T			
VMD-100105	100-105	32	58	80	130		VMC-100105N/T	WC..050308	TSB-30070	TXL-8
VMD-105110	105-110	32	58	80	130	PLD-2045	VMC-105110N/T			
VMD-110115	110-115	32	58	80	130	TiN-H	VMC-110115N/T			
VMD-115120	115-120	40	70	90	145		VMC-115120N/T			
VMD-120125	120-125	40	70	90	145		VMC-120125N/T	WC..06T308	TSB-35090	
VMD-125130	125-130	40	70	90	145		VMC-125130N/T			
VMD-130135	130-135	40	70	90	145	PLD-2556	VMC-130135N/T			TXL-15
VMD-135140	135-140	40	70	90	145	TiN-H	VMC-135140N/T			
VMD-140150	140-150	50	80	100	160		VMC-140150N/T			
VMD-150160	150-160	50	80	100	160		VMC-150160N/T			
VMD-160170	160-170	50	80	100	160	PLD-3068	VMC-160170N/T	WC..080408	TSB-40110	
VMD-170180	170-180	50	80	100	160	TiN-H	VMC-170180N/T			

●V-MAX 드릴 헤드는 최대직경으로 공급됩니다. (Drill head is supplied with Max. diameter)



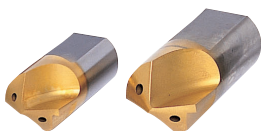
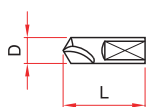
- VMD 카트리지는 드릴바디의 수명을 연장시키고 바깥쪽 카트리지 단면을 밀링 작업으로 직경을 (5mm) 조절할 수 있습니다.
- Please shorten the length of outer cartridge if smaller diameter is needed.
(EX:Ø77=by 1.5mm cutting MDC-075080T)



CARTRIDGE

DRILLING RANGE	INNER	OUTER	INSERT	NO.OF INSERT	SCREW	DRIVER
45- 50	VMC-045050N	VMC-045050T	WC..030204	2	TSB-22045	TXL-6
50- 55	VMC-050055N	VMC-050055T				
55- 60	VMC-055060N	VMC-055060T	WC..040204	2	TSB-25055	TXL-8
60- 65	VMC-060065N	VMC-060065T				
65- 70	VMC-065070N	VMC-065070T	WC..050308	2	TSB-30070	
70- 75	VMC-070075N	VMC-070075T				
75- 80	VMC-075080N	VMC-075080T				TXL-15
80- 85	VMC-080085N	VMC-080085T				
85- 90	VMC-085090N	VMC-085090T	WC..06T308	2	TSB-35090	
90- 95	VMC-090095N	VMC-090095T				
95-100	VMC-095100N	VMC-095100T				TXL-8
100-105	VMC-100105N	VMC-100105T	WC..050308	3	TSB-30070	
105-110	VMC-105110N	VMC-105110T				
110-115	VMC-110115N	VMC-110115T				
115-120	VMC-115120N	VMC-115120T				TXL-15
120-125	VMC-120125N	VMC-120125T	WC..06T308	3	TSB-35090	
125-130	VMC-125130N	VMC-125130T				
130-135	VMC-130135N	VMC-130135T				
135-140	VMC-135140N	VMC-135140T				
140-150	VMC-140150N	VMC-140150T				
150-160	VMC-150160N	VMC-150160T	WC..080408	3	TSB-40110	
160-170	VMC-160170N	VMC-160170T				
170-180	VMC-170180N	VMC-170180T				

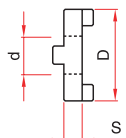
PILOT DRILL



CODE NO.	D	L
PLD-V1035 TIN-H	10	35
PLD-V1238 TIN-H	12	38
PLD-V1645 TIN-H	16	
PLD-2045 TIN-H	20	45
PLD-2556 TIN-H	25	56
PLD-3068 TIN-H	30	68

●EX : PLD-2556 TiN-H(25TiN coated oil hole)

DRIVE RING



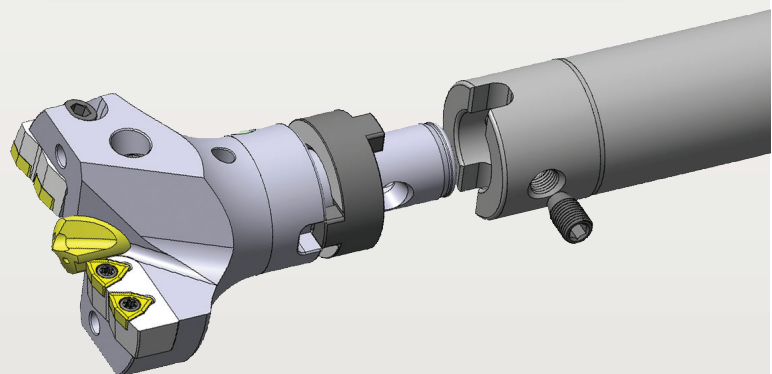
CODE NO.	D	d	S
DVR-281310	28	13	10
DVR-321610	32	16	
DVR-402212	40	22	12
DVR-482712	48	27	
DVR-583214	58	32	14
DVR-704014	70	40	
DVR-805016	80	50	16



새로워진 V-MAX Drill! Improved V-MAX Drill!

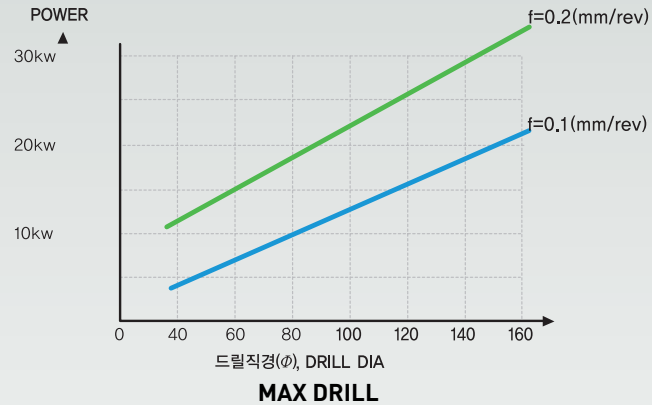
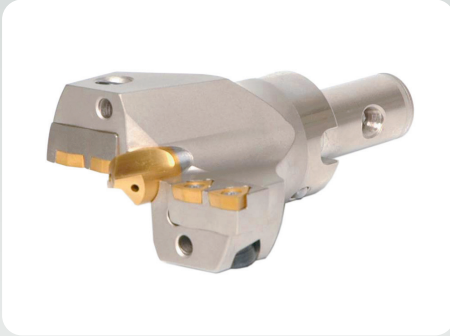


- The drill body treated by forging was much solidier and much stronger in impact.
드릴바디를 단조처리하여 더욱 단단하고 충격에 강하다.
- The especially treated surface of body make the inner-abrasion much better and the life make much longer.
바디표면을 특수표면처리하여 내마모성 및 수명이 길어졌다!
- As this drill was designed more stably, this drill is steady of drilling and is good of economical efficiency.
더욱 안정된 설계로 제작되어 MXD보다 드릴링이 안정되어 경제성이 뛰어나다!
- Drilling diameters are from 45mm to 180mm and the drilling depth is freely adjustable by using the MX modular system.
가공직경 Ø45~Ø180이며, 가공깊이는 MX Modular sytem으로 자유롭게 조절할 수 있다!
- As this drill is Cartridge(VMC) type, the drilling diameters are adjustable.
카트리지(VMC) 타입으로 드릴바디의 수명을 연장시키고 가공직경을 조절할 수 있다!
- We can supply to customers promptly by keeping stable stocks.
안정된 재고관리로 원하시는 제품을 신속히 사용할 수 있다!

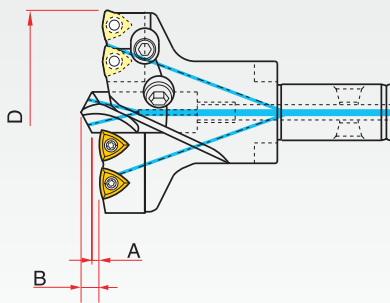


- The connecting strength by the MX moduler system is excellent and the drilling depth is freely adjustable by connecting MXB, MXR and MXA.
- MX 모듈러 시스템에 의한 체결방식으로 체결강성이 뛰어나며, 가공깊이를 MXB, MXR, MXA등으로 연결하여 가공깊이를 자유롭게 조절할 수 있습니다.

POWER REQUIREMENTS



Pilot Drill 높이

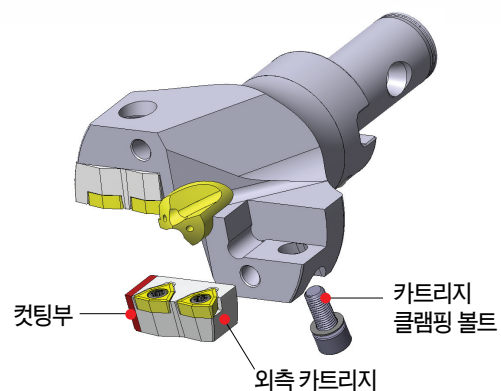


드릴경 D	2~4 x D		4~6 x D		6~8 x D	
	A	B	A	B	A	B
45-55	1.6	4.0	1.8	4.2	2.0	4.4
55-75	1.8	5.4	2.0	5.6	2.2	5.8
75-100	2.2	6.5	2.5	6.8	2.8	7.1
100-120	2.4	7.7	2.8	8.1	3.2	8.5
120-170	3.2	9.9	3.6	10.3	4.0	10.7
170-180	3.5	12.2	3.9	12.6	4.3	13.0

The diameter adjusting procedures of VMD(MXD)

VMD(MXD) 가공직경 조절방법

- 1) Loosen the clamping bolt of the outer cartridge and remove it from the drill body
외측카트리지를, 카트리지 클램핑 볼트를 풀어 바디에서 이탈시킨다.
- 2) Cut off the inside part, the contacted side of the outer cartridge by milling after calculating the drilling diameter
외측카트리지의 측면 밀착부를, 가공하려는 직경을 계산하여 밀링작업한다.
- 3) Slick the sharp corner of the cut cartridge.
컷팅된 외측카트리지의 날카로운 모서리면을 모따기 처리한다.



- 4) Adhere the cartridge closely to the drill body not happen gap and fix the cartridge with bolt tightly.
외측카트리지를 틈이 발생되지 않도록 바디에 밀착시키면서 카트리지 클램핑 볼트로 단단히 고정한다.

Example

If you set VMD-135140 to $\phi 136$
VMD-135140을 $\phi 136$ 로 셋팅한다면

The standard drill diameter is $\phi 140$ so $\phi 140 - \phi 136 = 4 \Rightarrow 4 \div 2 = 2$ [calculation by semidiameter], 2mm is cut off.

기본 직경은 $\phi 140$ 이므로, $\phi 140 - \phi 136 = 4 \Rightarrow 4 \div 2 = 2$ (반지름으로 계산, 2mm를 컷팅한다.