

TOOLING SYSTEM

MX Holder System
Basic Holder System



TOOLING SYSTEM

● MX Holder

-MX Modular Type

- Extension
- Reduction
- Adaptor

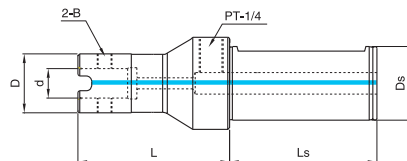
● Basic Holder

-Weldon B type

- Side Lock type
- Ext Modular Type

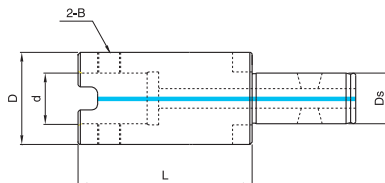
MX HOLDER

MXA/MXB



● MX CYLINDRICAL SHANK Type

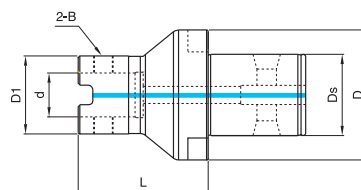
CODE NO.	Ds	d	L	D	Ls	B	DRIVE RING
MXA-3213115	32	13	115	28	70	MTB-08115	DVR-281310
MXA-3213200	32	13	200	28			DVR-321610
MXA-3213300	32	13	300	28			
MXA-4016125	40	16	125	32	80	MTB-10145	DVR-402212
MXA-4016200	40	16	200	32			
MXA-4016300	40	16	300	32			
MXA-4022148	40	22	148	40		MTB-12175	DVR-482712
MXA-4022200	40	22	200	40			
MXA-4022300	40	22	300	40			
MXA-4027168	40	27	168	48		MTB-12195	DVR-583214
MXA-4027300	40	27	300	48			
MXA-4032186	40	32	186	58	80	MTB-16260	DVR-704014
MXA-4032300	40	32	300	58			
MXA-W5040186	50	40	186	70			
MXA-W5040300	50	40	300	70			
MXA-W5050184	50	50	184	80			DVR-805016
MXA-W5050300	50	50	300	80			



● MX EXTENSION

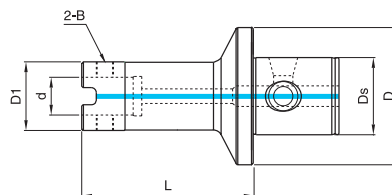
CODE NO.	D	d	L	Ds	B	DRIVE RING
MXB-2813115	28	13	115	13	MTB-08115	DVR-281310
MXB-2813150	28	13	150	13		
MXB-2813200	28	13	200	13		
MXB-2813300	28	13	300	13	MTB-08115	DVR-321610
MXB-3216115	32	16	115	16		
MXB-3216200	32	16	200	16		
MXB-3216300	32	16	300	16	MTB-10145	DVR-402212
MXB-4022113	40	22	113	22		
MXB-4022200	40	22	200	22		
MXB-4022300	40	22	300	22	MTB-12175	DVR-482712
MXB-4827113	48	27	113	27		
MXB-4827200	48	27	200	27		
MXB-4827300	48	27	300	27	MTB-12195	DVR-583214
MXB-5832186	58	32	186	32		
MXB-5832300	58	32	300	32		
MXB-7040186	70	40	186	40	MTB-16260	DVR-704014
MXB-7040300	70	40	300	40		
MXB-7040500	70	40	500	40		
MXB-8050204	80	50	204	50		DVR-805016
MXB-8050300	80	50	300	50		
MXB-8050500	80	50	500	50		

●MX MODULAR SYSTEM 은 사용자의 편의를 위하여 다양한 길이와 강성을 유지하기 위해 EXTENSION 및 REDUCER 또는 MAS403/BT, DIN2080/NT, DIN228/MT, DIN69871/SK 타입의 각종 아바를 조립하여 강성 및 가공조건을 만족시켜 드립니다.



● **MX REDUCER**

CODE NO.	Ds	d	L	D	D1	B	D1/DRIVE RING	D/DRIVE RING
MXR-1613100	16	13	100	32	28	MTB-08115	DVR-281310	DVR-321610
MXR-2216100	22	16	100	40	32	MTB-08115	DVR-321610	DVR-402212
MXR-2722100	27	22	100	48	40	MTB-10145	DVR-402212	DVR-482712
MXR-3213100	32	13	100	58	28	MTB-08115	DVR-281310	DVR-583214
MXR-3216100	32	16	100	58	32	MTB-08115	DVR-321610	DVR-583214
MXR-3222100	32	22	100	58	40	MTB-10145	DVR-402212	DVR-583214
MXR-3227100	32	27	100	58	48	MTB-12175	DVR-482712	DVR-583214
MXR-4032100	40	32	100	70	58	MTB-12195	DVR-583214	DVR-704014
MXR-5013080	50	13	80	80	28	MTB-08115	DVR-281310	DVR-805016
MXR-5016080	50	16	80	80	32	MTB-08115	DVR-321610	DVR-805016
MXR-5022080	50	22	80	80	40	MTB-10145	DVR-402212	DVR-805016
MXR-5027080	50	27	80	80	48	MTB-12175	DVR-482712	DVR-805016
MXR-5032080	50	32	80	80	58	MTB-12195	DVR-583214	DVR-805016
MXR-5040150	50	40	150	80	70	MTB-16260	DVR-704014	DVR-805016



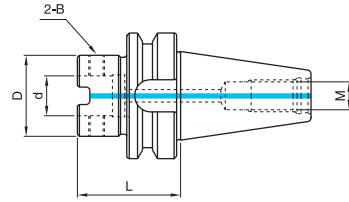
● **MX + EXT ADAPTOR**

CODE NO.	Ds	d	L	D	D1	B	D1/DRIVE RING
MXE-3613100	36	13	100	63	28	MTB-08115	DVR-281310
MXE-3616100	36	16	100	63	32	MTB-08115	DVR-321610
MXE-3622100	36	22	100	63	40	MTB-10145	DVR-402212
MXE-3627100	36	27	100	63	48	MTB-12175	DVR-482712
MXE-3632100	36	32	100	63	58	MTB-12195	DVR-583214
MXE-4513100	45	13	100	80	28	MTB-08115	DVR-281310
MXE-4516100	45	16	100	80	32	MTB-10145	DVR-321610
MXE-4522100	45	22	100	80	40	MTB-12175	DVR-402212
MXE-4527100	45	27	100	80	48	MTB-12195	DVR-482712
MXE-4532100	45	32	100	80	58	MTB-16260	DVR-583214

●EXT MODULAR SYSTEM은 BT, NT, MT, SK상크의 ETA홀더에 조립하여 사용할 수 있는 모듈시스템입니다. MX 드릴 직경에 길이가 6배 이상 돌출 될 경우 익스텐션에 레듀사를 적절히 조립하면 떨림없이 가공할 수 있으며 드릴강성을 높일 수 있습니다. MXE 레듀사는 EXT 모듈타입의 아바와 호환성을 이룹니다.

MX HOLDER

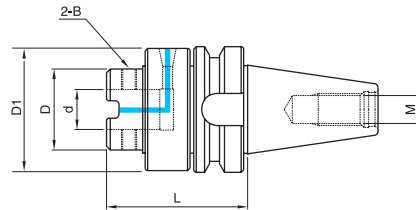
BT-MXA/BT-OMX/BT-OAX



● MAS403/BT MX MODULAR Type

CODE NO.	d	L	D	M	B
BT40-MXA-32060	32	60	58	M16	MTB-12195
BT50-MXA-32070	32	70	58	M24	
BT50-MXA-50080	50	80	80	M24	MTB-16260

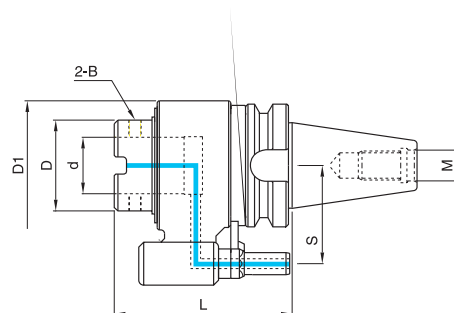
●스핀들 내부의 절삭유 공급이 가능한 장비에서 효율적으로 사용할 수 있습니다.



● MAS403/BT MX MODULAR OIL FEED Type

CODE NO.	d	L	D	D1	M	B
BT40-OMX-32095	32	95	65	88	M16	MTB-10145
BT50-OMX-32100	32	100	65	98	M24	MTB-12175
BT50-OMX-50110	50	110	80	115	M24	MTB-16225

●Manual type Internal Oil hole Holder. 수동 내부 급유형 절삭유 공급 장치입니다.



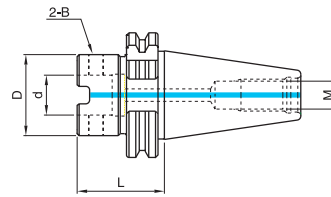
● MAS403/BT MX MODULAR AUTO MATIC Type

CODE NO.	d	L	D	D1	S	M	B
BT40-OAX-32120	32	120	65	80	65	M16	MTB-10145
BT50-OAX-32145	32	145	65	98	80	M24	MTB-12175
BT50-OAX-50150	50	150	80	98	80	M24	MTB-16225

● Automatic type Internal Oil hole Holder. 자동공구 교환이 가능한 내부 급유형 절삭유 공급 장치입니다.

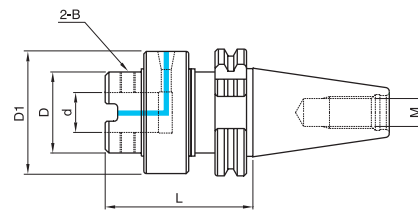
MX HOLDER

SK-MXA/SK-OMX



● DIN69871-AD MX MODULAR Type

CODE NO.	d	L	D	M	B
SK40-MXA-32065	32	65	58	M16	MTB-12195
SK50-MXA-32070	32	70	58	M24	
SK50-MXA-50070	50	70	80	M24	MTB-16260



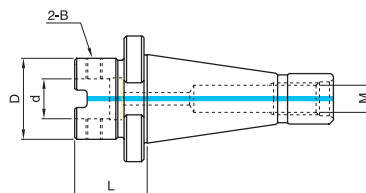
● DIN69871-AD MX MODULAR OIL FEED Type

CODE NO.	d	L	D	D1	M	B
SK40-OMX-32100	32	100	65	88	M16	MTB-12195
SK50-OMX-32100	32	100	65	98	M24	
SK50-OMX-50110	50	110	80	115	M24	MTB-16260

MX HOLDER

NT-MXA/NT-OMX

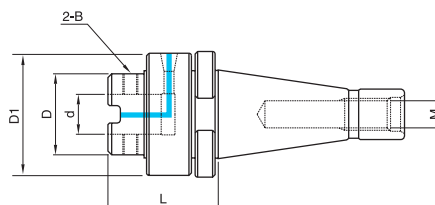
●MX MODULAR HOLDER 은 가공 장비에 절삭유 공급장치가 장착 되지 않았거나 톨장이 짧아 외부 절삭유 공급할 경우 MXA type 의 베이직홀더를 사용하십시오. 스피들 내부로 절삭유가 공급되면 최상의 조건으로 드릴 작업을 할 수 있습니다.



● DIN2080 MX MODULAR Type

CODE NO.	d	L	D	M	B
NT40-MXA-32050	32	50	58	5/8-11 UNC	MTB-12195
NT50-MXA-32050	32	50	58	1"-8 UNC	
NT50-MXA-50080	50	80	80	1"-8 UNC	MTB-16260
NT40-MXA-32050M	32	50	58	M16	MTB-12195
NT50-MXA-32050M	32	50	58	M24	
NT50-MXA-50080M	50	80	80	M24	MTB-16260

●MX MODULAR BASIC HOLDER 은 간이형 오일홀 공급 장치입니다. MXD , TSD , TMD 외 깊은 홀을 드릴링 할 때 사용되는 홀더입니다.

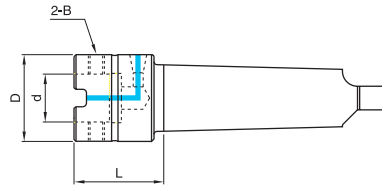


● DIN2080 MX MODULAR OIL FEED Type

CODE NO.	d	L	D	D1	M	B
NT40-OMX-32080	32	80	65	88	5/8-11 UNC	MTB-12195
NT50-OMX-32080	32	80	65	98	1"-8 UNC	
NT50-OMX-50085	50	85	80	115	1"-8 UNC	MTB-16260
NT40-OMX-32080M	32	80	65	88	M16	MTB-12195
NT50-OMX-32080M	32	80	65	98	M24	
NT50-OMX-50085M	50	85	80	115	M24	MTB-16260

MX HOLDER

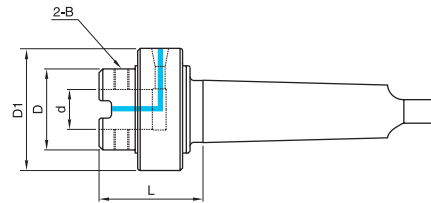
MT-MXA/MT-OMX



● DIN228B/ MX MODULAR Type

CODE NO.	d	L	D	B
MT4-MXA-32060	32	60	58	MTB-12195
MT5-MXA-32060	32	60	58	
MT5-MXA-50080	50	80	80	MTB-16260
MT6-MXA-32065	32	65	58	MTB-12195
MT6-MXA-50080	50	80	80	MTB-16260

●코터홈이 있는 경우 별도 지정해 주시기 바랍니다.



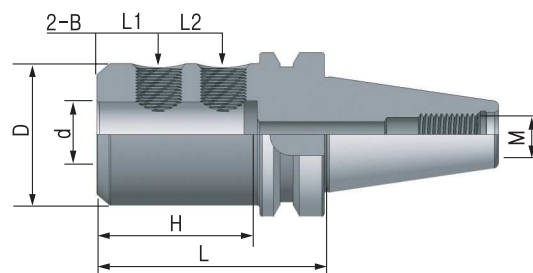
● DIN228B/MX MODULAR OIL FEED Type

CODE NO.	d	L	D	D1	B
MT4-OMX-32075	32	75	65	88	MTB-12195
MT5-OMX-32075	32	75	65	88	
MT5-OMX-50085	50	85	80	115	MTB-16260
MT6-OMX-32075	32	75	65	88	MTB-12195
MT6-OMX-50085	50	85	80	115	MTB-16260

●코터홈이 있는 경우 별도 지정해 주시기 바랍니다.

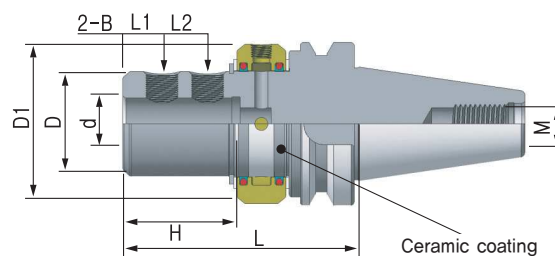
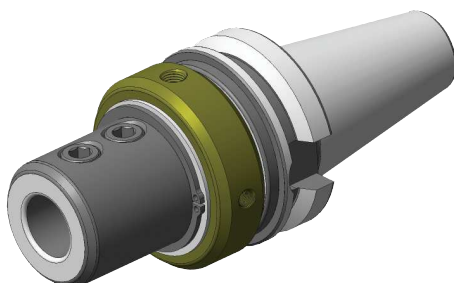
BASIC HOLDER NEW TYPE ARBOR

BT-WSA/BT-CMS



MAS / BT WELDON-B TYPE

CODE NO.	d	L	D	H	L1	L2	B	M
BT40-WSA-20070B	20	70	50	50	25	-	M16 × 1.5	M16
BT40-WSA-25090B	25	90	55	60	24	25	M18 × 2.0	
BT40-WSA-32095B	32	95	65	70	24	28	M20 × 2.0	
BT50-WSA-20085B	20	85	50	50	25	-	M16 × 1.5	M24
BT50-WSA-25105B	25	105	55	60	24	25	M18 × 2.0	
BT50-WSA-32110B	32	110	65	70	24	28	M20 × 2.0	
BT50-WSA-40120B	40	120	80	80	30	32	M20 × 2.0	
BT50-WSA-50130B	50	130	90	80	35	35	M24 × 2.0	



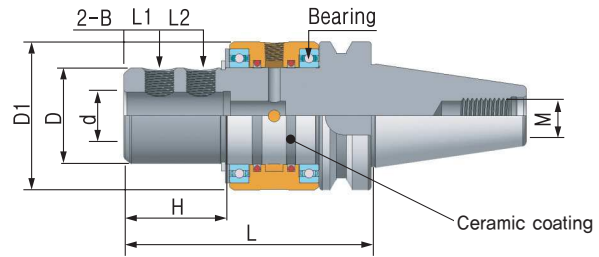
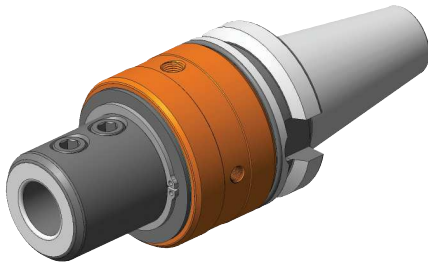
MAS / BT WELDON-B OIL FEED TYPE

CODE NO.	d	L	D	D1	H	L1	L2	B	M
BT40-CMS-20110B	20	110	50	83	50	25	-	M16 × 1.5	M16
BT40-CMS-25130B	25	130	55	88	60	24	25	M18 × 2.0	
BT40-CMS-32135B	32	135	65	98	70	24	28	M20 × 2.0	
BT50-CMS-20120B	20	120	50	83	50	25	-	M16 × 1.5	M24
BT50-CMS-25140B	25	140	55	88	62	24	25	M18 × 2.0	
BT50-CMS-32145B	32	145	65	98	70	24	28	M20 × 2.0	
BT50-CMS-40155B	40	155	80	113	80	30	32	M20 × 2.0	
BT50-CMS-50170B	50	170	90	123	80	35	35	M24 × 2.0	

※ 오일캡 실제 색상은 검정 (Black Oxid)입니다

NEW TYPE ARBOR BASIC HOLDER

BT-CMB/BT-CAW

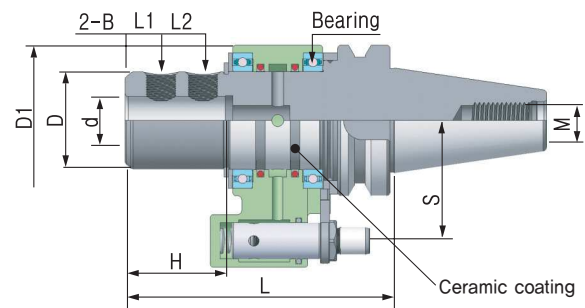
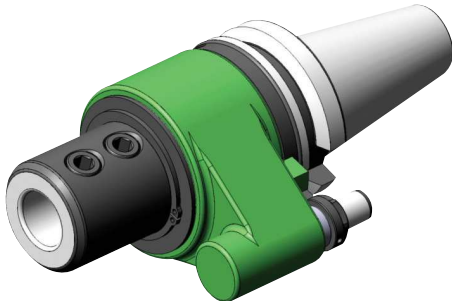


MAS / BT WELDON-B OIL FEED BEARING TYPE

★ : 분리형(드릴체결부+스핀들부)

CODE NO.	d	L	D	D1	H	L1	L2	B	M
BT40-CMB-20135B	20	135	50	82	50	25	-	M16 × 1.5	M16
BT40-CMB-25155B	25	155	55	90	60	24	25	M18 × 2.0	
BT40-CMB-32165B	32	165	65	100	70	24	28	M20 × 2.0	
BT50-CMB-20145B	20	145	50	82	50	25	-	M16 × 1.5	M24
BT50-CMB-25165B	25	165	55	90	60	24	25	M18 × 2.0	
BT50-CMB-32170B	32	170	65	100	70	24	28	M20 × 2.0	
★ BT50-CMB-40180B	40	180	65	100	80	30	32	M20 × 2.0	
★ BT50-CMB-50190B	50	190	65	100	80	35	35	M24 × 2.0	

※ 오일캡 실제 색상은 검정 (Black Oxid)입니다



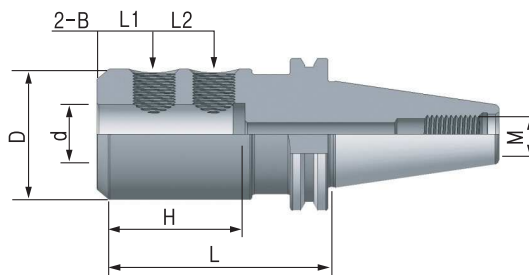
MAS / BT WELDON-B AUTO Matic TYPE

★ : 분리형(드릴체결부+스핀들부)

CODE NO.	d	L	D	D1	H	L1	L2	B	M	S
BT40-CAW-20130B	20	130	50	80	50	25	-	M16 × 1.5	M16	65
★ BT40-CAW-25150B	25	150	58	80	60	24	25	M18 × 2.0		
★ BT40-CAW-32155B	32	155	65	80	70	24	28	M20 × 2.0		
BT50-CAW-20150B	20	150	50	100	50	25	-	M16 × 1.5	M24	80
BT50-CAW-25170B	25	170	55	100	60	24	25	M18 × 2.0		
BT50-CAW-32180B	32	180	65	100	70	24	28	M20 × 2.0		
★ BT50-CAW-40190B	40	190	65	100	80	30	32	M20 × 2.0		
★ BT50-CAW-50200B	50	200	65	100	80	35	35	M24 × 2.0		

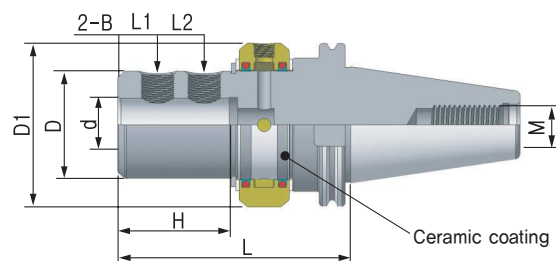
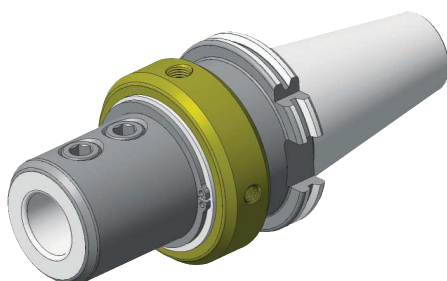
BASIC HOLDER NEW TYPE ARBOR

SK-WSA/SK-CMS



● DIN 69871 / SK WELDON-B TYPE

CODE NO.	d	L	D	H	L1	L2	B	M
SK40-WSA-20065B	20	65	50	50	25	-	M16 × 1.5	M16
SK40-WSA-25100B	25	100	55	60	24	25	M18 × 2.0	
SK40-WSA-32105B	32	105	65	70	24	28	M20 × 2.0	
SK50-WSA-20065B	20	65	50	50	25	-	M16 × 1.5	M24
SK50-WSA-25100B	25	100	55	60	24	25	M18 × 2.0	
SK50-WSA-32105B	32	105	65	70	24	28	M20 × 2.0	
SK50-WSA-40110B	40	110	80	80	30	32	M20 × 2.0	
SK50-WSA-50125B	50	125	90	80	35	35	M24 × 2.0	



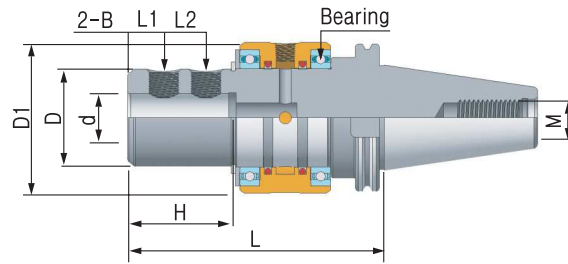
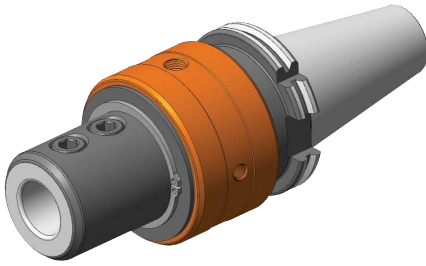
● DIN 69871 / SK WELDON-B OIL FEED TYPE

CODE NO.	d	L	D	D1	H	L1	L2	B	M
SK40-CMS-20115B	20	115	50	83	50	25	-	M16 × 1.5	M16
SK40-CMS-25135B	25	135	55	88	60	24	25	M18 × 2.0	
SK40-CMS-32140B	32	140	65	98	70	24	28	M20 × 2.0	
SK50-CMS-20115B	20	115	50	83	50	25	-	M16 × 1.5	M24
SK50-CMS-25135B	25	135	55	88	62	24	25	M18 × 2.0	
SK50-CMS-32140B	32	140	65	98	70	24	28	M20 × 2.0	
SK50-CMS-40150B	40	150	80	113	80	30	32	M20 × 2.0	
SK50-CMS-50165B	50	165	90	123	80	35	35	M24 × 2.0	

※ 오일캡 실제 색상은 검정 (Black Oxid)입니다

NEW TYPE ARBOR BASIC HOLDER

SK-CMB



● DIN69871 / SK WELDON-B OIL FEED BEARING TYPE

★ : 분리형(드릴체결부+스핀들부)

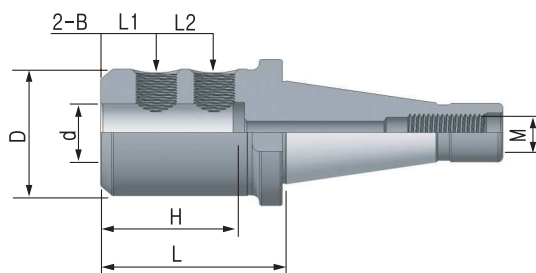
CODE NO.	d	L	D	D1	H	L1	L2	B	M
SK40-CMB-20145B	20	145	50	82	50	25	-	M16 × 1.5	M16
SK40-CMB-25165B	25	165	55	90	60	24	25	M18 × 2.0	
SK40-CMB-32170B	32	170	65	100	70	24	28	M20 × 2.0	
SK50-CMB-20145B	20	145	50	82	50	25	-	M16 × 1.5	M24
SK50-CMB-25165B	25	165	55	90	60	24	25	M18 × 2.0	
SK50-CMB-32170B	32	170	65	100	70	24	28	M20 × 2.0	
★SK50-CMB-40180B	40	180	65	100	80	30	32	M20 × 2.0	
★SK50-CMB-50190B	50	190	65	100	80	35	35	M24 × 2.0	

※ 오일캡 실제 색상은 검정 (Black Oxid)입니다

BASIC HOLDER

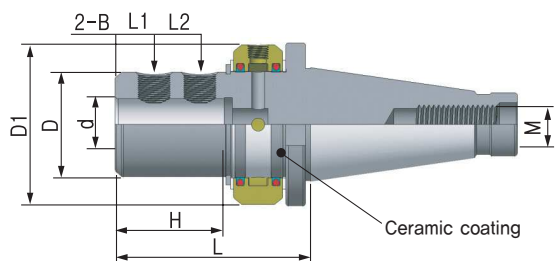
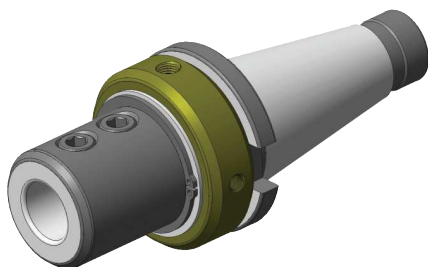
BASIC HOLDER NEW TYPE ARBOR

NT-WSA/NT-CMS



● DIN2080 / NT WELDON-B TYPE

CODE NO.	d	L	D	H	L1	L2	B	M
NT40-WSA-20060B	20	60	50	50	25	-	M16 × 1.5	5/8"-11UNC
NT40-WSA-25080B	25	80	55	60	24	25	M18 × 2.0	
NT40-WSA-32085B	32	85	65	70	24	28	M20 × 2.0	
NT50-WSA-20065B	20	65	50	50	25	-	M16 × 1.5	1"-8UNC
NT50-WSA-25085B	25	85	55	60	24	25	M18 × 2.0	
NT50-WSA-32090B	32	90	65	70	24	28	M20 × 2.0	
NT50-WSA-40100B	40	100	80	80	30	32	M20 × 2.0	
NT50-WSA-50110B	50	110	90	80	35	35	M24 × 2.0	M16
NT40-WSA-20060MB	20	60	50	50	25	-	M16 × 1.5	
NT40-WSA-25080MB	25	80	55	60	24	25	M18 × 2.0	
NT40-WSA-32085MB	32	85	65	70	24	28	M20 × 2.0	M24
NT50-WSA-20065MB	20	65	50	50	25	-	M16 × 1.5	
NT50-WSA-25085MB	25	85	55	60	24	25	M18 × 2.0	
NT50-WSA-32090MB	32	90	65	70	24	28	M20 × 2.0	
NT50-WSA-40100MB	40	100	80	80	30	32	M20 × 2.0	
NT50-WSA-50110MB	50	110	90	80	35	35	M24 × 2.0	



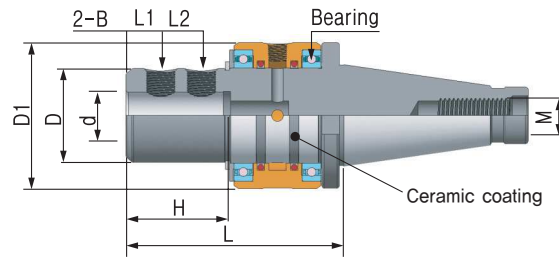
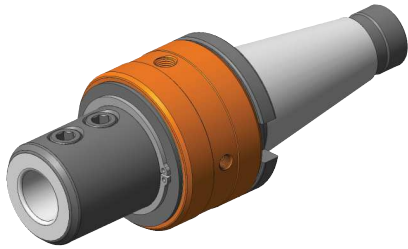
● DIN2080 / NT WELDON-B OIL FEED TYPE

CODE NO.	d	L	D	D1	H	L1	L2	B	M
NT40-CMS-20095B	20	95	50	83	50	25	-	M16 × 1.5	5/8"-11UNC
NT40-CMS-25115B	25	115	55	88	60	24	25	M18 × 2.0	
NT40-CMS-32120B	32	120	65	98	70	24	28	M20 × 2.0	
NT50-CMS-20095B	20	95	50	83	50	25	-	M16 × 1.5	1"-8UNC
NT50-CMS-25115B	25	115	55	88	62	24	25	M18 × 2.0	
NT50-CMS-32120B	32	120	65	98	70	24	28	M20 × 2.0	
NT50-CMS-40130B	40	130	80	113	80	30	32	M20 × 2.0	
NT50-CMS-50140B	50	140	90	123	80	35	35	M24 × 2.0	M16
NT40-CMS-20095MB	20	95	50	83	50	25	-	M16 × 1.5	
NT40-CMS-25115MB	25	115	55	88	60	24	25	M18 × 2.0	
NT40-CMS-32120MB	32	120	65	98	70	24	28	M20 × 2.0	M24
NT50-CMS-20095MB	20	95	50	83	50	25	-	M16 × 1.5	
NT50-CMS-25115MB	25	115	55	88	62	24	25	M18 × 2.0	
NT50-CMS-32120MB	32	120	65	98	70	24	28	M20 × 2.0	
NT50-CMS-40130MB	40	130	80	113	80	30	32	M20 × 2.0	
NT50-CMS-50140MB	50	140	90	123	80	35	35	M24 × 2.0	

※ 오일캡 실제 색상은 검정 (Black Oxid)입니다

NEW TYPE ARBOR BASIC HOLDER

NT-CMB



★ : 분리형(드릴체결부+스핀들부)

● DIN2080 / NT WELDON-B OIL FEED BEARING TYPE

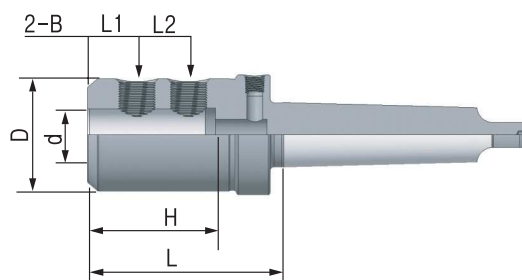
CODE NO.	d	L	D	D1	H	L1	L2	B	M
NT40-CMB-20125B	20	125	50	82	50	25	-	M16 × 1.5	5/8"-11UNC
NT40-CMB-25145B	25	145	55	90	60	24	25	M18 × 2.0	
NT40-CMB-32150B	32	150	65	100	70	24	28	M20 × 2.0	
NT50-CMB-20125B	20	125	50	82	50	25	-	M16 × 1.5	1"-8UNC
NT50-CMB-25145B	25	145	55	90	60	24	25	M18 × 2.0	
NT50-CMB-32150B	32	150	65	100	70	24	28	M20 × 2.0	
★NT50-CMB-40160B	40	160	65	100	80	30	32	M20 × 2.0	
★NT50-CMB-50170B	50	170	65	100	80	35	35	M24 × 2.0	M16
NT40-CMB-20125MB	20	125	50	82	50	25	-	M16 × 1.5	
NT40-CMB-25145MB	25	145	55	90	60	24	25	M18 × 2.0	
NT40-CMB-32150MB	32	150	65	100	70	24	28	M20 × 2.0	M24
NT50-CMB-20125MB	20	125	50	82	50	25	-	M16 × 1.5	
NT50-CMB-25145MB	25	145	55	90	60	24	25	M18 × 2.0	
NT50-CMB-32150MB	32	150	65	100	70	24	28	M20 × 2.0	
★NT50-CMB-40160MB	40	160	65	100	80	30	32	M20 × 2.0	
★NT50-CMB-50170MB	50	170	65	100	80	35	35	M24 × 2.0	

※ 오일캡 실제 색상은 검정 (Black Oxid)입니다

BASIC HOLDER

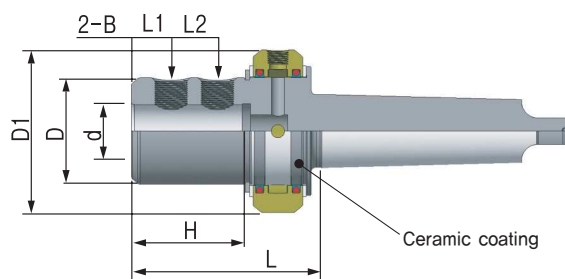
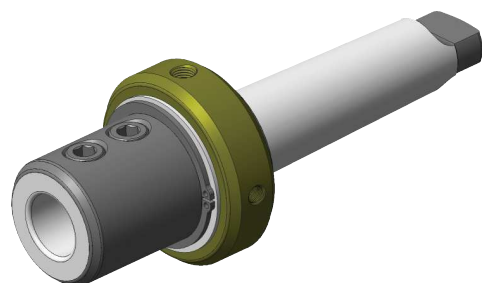
BASIC HOLDER NEW TYPE ARBOR

MT-WSA/MT-CMS



● DIN228B / MT WELDON-B TYPE

CODE NO.	d	L	D	H	L1	L2	B
MT4-WSA-20075B	20	75	50	50	25	-	M16 × 1.5
MT4-WSA-25095B	25	95	55	60	24	25	M18 × 2.0
MT4-WSA-32105B	32	105	65	70	24	28	M20 × 2.0
MT5-WSA-20080B	20	80	50	50	25	-	M16 × 1.5
MT5-WSA-25100B	25	100	55	60	24	25	M18 × 2.0
MT5-WSA-32105B	32	105	65	70	24	28	M20 × 2.0
MT5-WSA-40115B	40	115	80	80	30	32	M20 × 2.0
MT6-WSA-32105B	32	105	65	50	25	-	M20 × 2.0
MT6-WSA-40115B	40	115	80	60	24	25	M20 × 2.0
MT6-WSA-50125B	50	125	90	70	24	28	M24 × 2.0



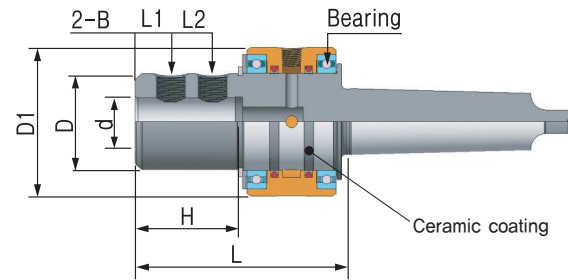
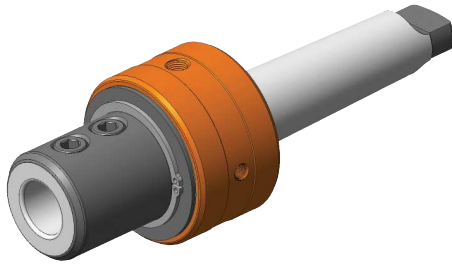
● DIN228B / MT WELDON-B OIL FEED TYPE

CODE NO.	d	L	D	D1	H	L1	L2	B
MT4-CMS-20085B	20	85	50	83	50	25	-	M16 × 1.5
MT4-CMS-25110B	25	110	55	88	60	24	25	M18 × 2.0
MT4-CMS-32115B	32	115	65	88	70	24	28	M20 × 2.0
MT5-CMS-25110B	25	110	55	88	60	24	25	M18 × 2.0
MT5-CMS-32115B	32	115	65	98	70	24	28	M20 × 2.0
MT5-CMS-40125B	40	125	80	98	80	30	32	M20 × 2.0
MT6-CMS-32120B	32	120	65	98	50	25	-	M20 × 2.0
MT6-CMS-40130B	40	130	80	98	60	24	25	M20 × 2.0
MT6-CMS-50140B	50	140	90	98	70	24	28	M24 × 2.0

※ 오일캡 실제 색상은 검정 (Black Oxid)입니다

NEW TYPE ARBOR BASIC HOLDER

MT-CMB



● DIN228B / MT WELDON-B OIL FEED BEARING TYPE

CODE NO.	d	L	D	D1	H	L1	L2	B
MT4-CMB-20110B	20	110	50	82	50	25	-	M16 × 1.5
MT4-CMB-25140B	25	140	55	90	60	24	25	M18 × 2.0
MT4-CMB-32145B	32	145	65	100	70	24	28	M20 × 2.0
MT5-CMB-25140B	25	140	55	90	60	24	25	M18 × 2.0
MT5-CMB-32145B	32	145	65	100	70	24	28	M20 × 2.0
MT5-CMB-40160B	40	160	80	100	80	30	32	M20 × 2.0
MT6-CMB-32150B	32	150	65	100	50	25	-	M20 × 2.0
MT6-CMB-40165B	40	165	80	100	60	24	25	M20 × 2.0
MT6-CMB-50175B	50	175	90	100	70	24	28	M24 × 2.0

※ 오일캡 실제 색상은 검정 (Black Oxid)입니다

BASIC HOLDER

놀라운 수명!! 탁월한 성능!!

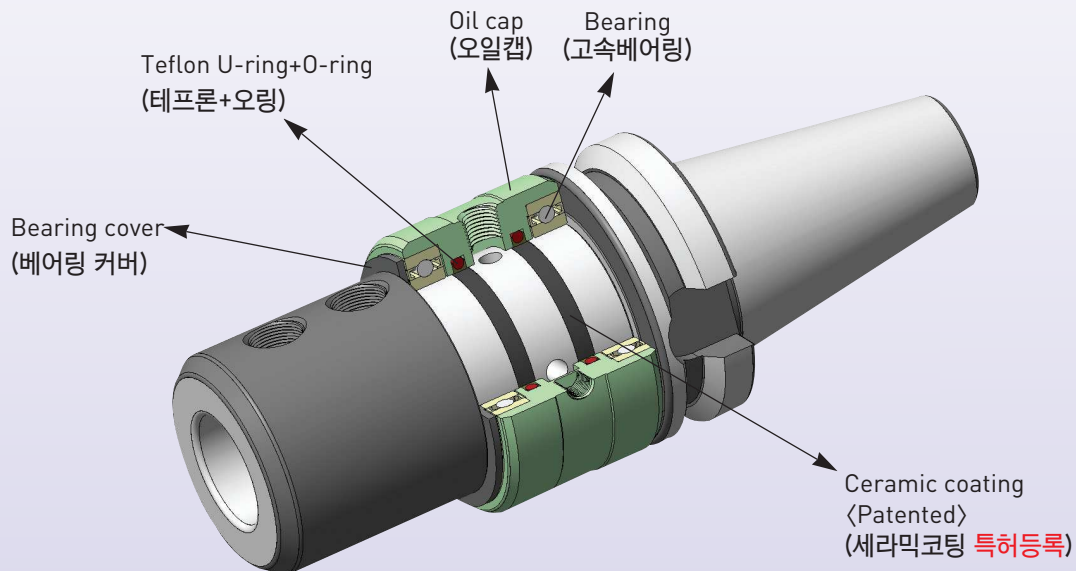
Surprising long life! Superior performance!

Let's meet the innovation Arbor

■ Patented article

We are now applying for
The International patent

<We got the patent for this in Jun 20, 2007.>



- ▶ 테프론과의 마찰부를 세라믹 코팅처리하여 아바 수명이 놀랍게 향상되었습니다.
(특허등록 : 2007년 6월 20일)

As the part of Arbor body touched with Teflon was treated by Ceramic coating, The arbor Life is much more upgraded.

- ▶ 특수성분 테프론 사용으로 미끄럼성을 높였습니다.

The sliding nature of Teflon is improved by adding the special ingredient.

- ▶ 베어링 장착으로 고속 회전 (실내경 $\phi 65$ 의 경우 max. 4,200)이 가능합니다.

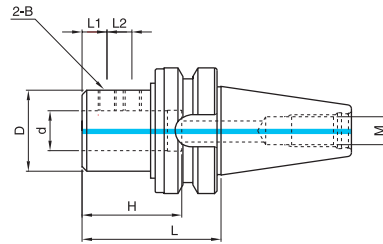
It is possible to turn with high speed by installing the bearings.(max.4,200)

- ▶ 생크체결은 DIN규격을 준수하였습니다.

The shank locking system was followed DIN regulation.

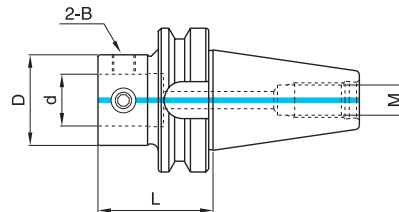
BASIC HOLDER

BT-SLA/BT-ETA



MAS403/BT SIDE LOCK Type

CODE NO.	d	L	D	H	L1	L2	B	M
BT50-SLA-20105	20	105	50	50	20	-	M12	M24
BT50-SLA-25105	25	105	50	60	20	20	M12	
BT50-SLA-32105	32	105	65	70	20	20	M14	
BT50-SLA-40105	40	105	80	80	20	25	M16	



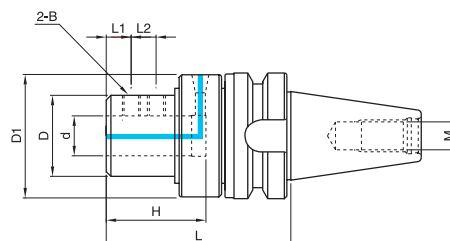
MAS403/BT EXT BASIC HOLDER

CODE NO.	D	d	L	B	M
BT30-ETA-22045	40	22	45	MTB-10145	M12
BT30-ETA-28055	50	28	55	MTB-12175	
BT40-ETA-22055	40	22	55	MTB-10145	M16
BT40-ETA-28030	50	28	30	MTB-12175	
BT40-ETA-28055	50	28	55	MTB-12175	
BT40-ETA-36055	63	36	55	MTB-16225	
BT50-ETA-22065	40	22	65	MTB-10145	M24
BT50-ETA-28070	50	28	70	MTB-12175	
BT50-ETA-36041	63	36	41	MTB-16225	
BT50-ETA-36080	63	36	80	MTB-16225	
BT50-ETA-45041	80	45	41	MTB-16260	
BT50-ETA-45080	80	45	80	MTB-16260	
BT50-ETA-55080	100	55	80	MTB-20330	

BASIC HOLDER

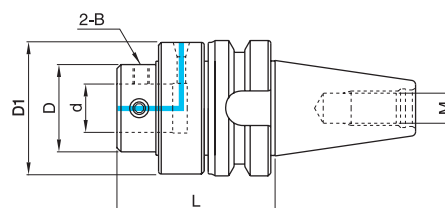
BT-OMS/BT-OME

●간이형 절삭유 공급 장치이며 특수 가공 처리된 메카니칼씰에 의하여 고속 회전이 가능합니다.
(MAX 1500RPM)



● MAS403/BT SIDE LOCK OIL FEED Type

CODE NO.	d	L	D	D1	H	L1	L2	B	M
BT40-OMS-20105	20	105	50	78	50	20	-	M12	M16
BT40-OMS-25120	25	120	50	78	60	20	20	M12	
BT40-OMS-32125	32	125	65	88	70	20	20	M14	
BT50-OMS-20120	20	120	50	78	50	20	-	M12	M24
BT50-OMS-25135	25	135	50	78	60	20	20	M12	
BT50-OMS-32135	32	135	65	98	70	20	20	M14	
BT50-OMS-40145	40	145	65	98	80	20	25	M16	
BT50-OMS-50170	50	170	90	123	90	35	35	M20	



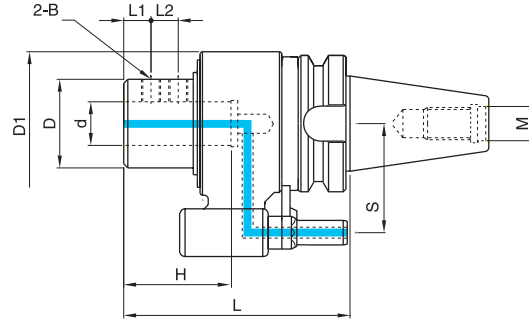
● MAS403/BT EXT MODULAR OIL FEED Type

CODE NO.	d	L	D	D1	B	M
BT40-OME-22090	22	90	50	78	MTB-10145	M16
BT40-OME-28095	28	95	50	78	MTB-12175	
BT40-OME-36100	36	100	65	88	MTB-16225	
BT50-OME-22105	22	105	50	78	MTB-10145	M24
BT50-OME-28105	28	105	50	78	MTB-12175	
BT50-OME-36120	36	120	65	98	MTB-16225	
BT50-OME-45120	45	120	80	115	MTB-16260	

BASIC HOLDER

BT-OAS/BT-OAE

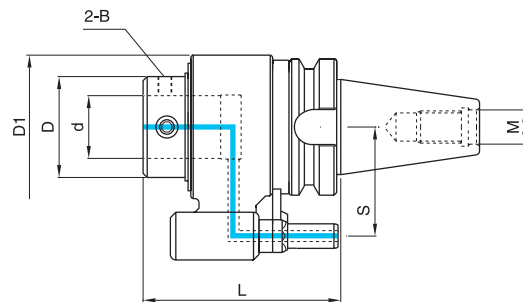
- 내열 내마모성이 우수한 테프론을 특수 처리하여 고속에서도 누수가 없고 마찰 저항이 작아 장시간 운전이 가능합니다. (MAX. 3000RPM)



● MAS403/BT SIDE LOCK AUTO MATIC Type

CODE NO.	d	L	H	L1	L2	D	D1	B	M	S
BT40-OAS-20120	20	120	50	20	—	55	80	M12	M16	65
BT40-OAS-25140	25	140	60	20	20	55	80	M12		
BT40-OAS-32140	32	140	70	20	20	65	80	M14		
BT50-OAS-20145	20	145	50	20	—	55	100	M12	M24	80
BT50-OAS-25165	25	165	60	20	20	55	100	M12		
BT50-OAS-32165	32	165	70	20	20	65	100	M14		
BT50-OAS-40175	40	175	80	20	25	65	100	M16		

- EXT 모듈타입을 사용하시면 게이지라인에서의 거리가 짧고 원통 및 단면 구속으로 밀림을 최소화할 수 있습니다.

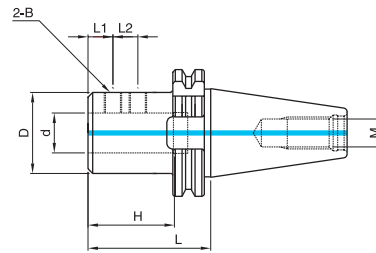


● MAS403/BT EXT MODULAR AUTO MATIC Type

CODE NO.	d	L	D	B	D1	M	S
BT40-OAE-22110	22	110	55	MTB-10145	80	M16	65
BT40-OAE-28115	28	115	55	MTB-12175			
BT40-OAE-36120	36	120	65	MTB-16225			
BT50-OAE-22135	22	135	55	MTB-10145	100	M24	80
BT50-OAE-28135	28	135	55	MTB-12175			
BT50-OAE-36145	36	145	65	MTB-16225			
BT50-OAE-45145	45	145	80	MTB-16260			

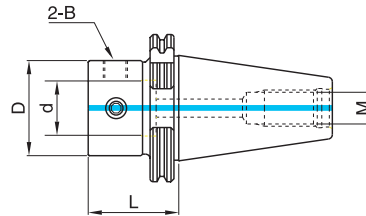
BASIC HOLDER

SK-SLA/SK-ETA



● DIN69871/SK SIDE LOCK Type

CODE NO.	d	L	D	H	L1	L2	B	M
SK50-SLA-32105	32	105	65	70	20	20	M14	M24
SK50-SLA-40105	40	105	65	80	20	25	M16	

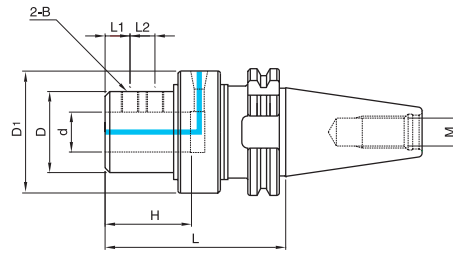


● DIN69871/SK EXT BASIC Type

CODE NO.	D	d	L	B	M
SK40-ETA-22045	40	22	45	MTB-10145	M16
SK40-ETA-28050	50	28	50	MTB-12175	
SK40-ETA-36065	63	36	65	MTB-16225	
SK50-ETA-22045	40	22	45	MTB-10145	M24
SK50-ETA-28050	50	28	50	MTB-12175	
SK50-ETA-36060	63	36	60	MTB-16225	
SK50-ETA-45060	80	45	60	MTB-16260	

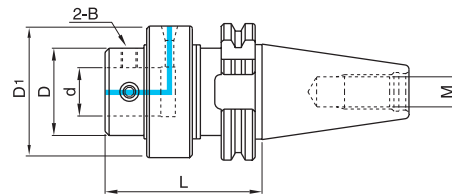
BASIC HOLDER

SK-OMS/SK-OME



● DIN69871/SK SIDE LOCK OIL FEED Type

CODE NO.	d	L	D	D1	H	L1	L2	B	M
SK40-OMS-20110	20	110	50	78	50	20	-	M12	M16
SK40-OMS-25125	25	125	50	78	60	20	20	M12	
SK40-OMS-32130	32	130	65	88	70	20	20	M14	
SK50-OMS-20105	20	105	50	78	50	20	-	M12	M24
SK50-OMS-25120	25	120	50	78	60	20	20	M12	
SK50-OMS-32125	32	125	65	98	70	20	20	M14	
SK50-OMS-40135	40	135	65	98	80	20	25	M16	
SK50-OMS-50165	50	165	90	123	90	35	35	M20	

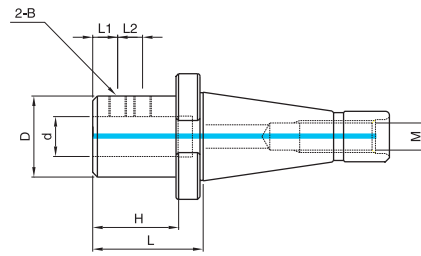


● DIN69871/SK EXT MODULAR OIL FEED Type

CODE NO.	d	L	D	D1	B	M
SK40-OME-22095	22	95	50	78	MTB-10145	M16
SK40-OME-28100	28	100	50	78	MTB-12175	
SK40-OME-36105	36	105	65	88	MTB-16225	
SK50-OME-22090	22	90	50	78	MTB-10145	M24
SK50-OME-28105	28	105	50	78	MTB-12175	
SK50-OME-36105	36	105	65	98	MTB-16225	
SK50-OME-45105	45	105	80	115	MTB-16260	

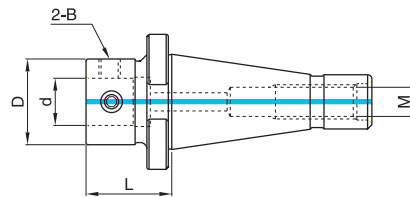
BASIC HOLDER

NT-SLA/NT-ETA



● DIN2080/NT SIDE LOCK Type

CODE NO.	d	L	D	H	L1	L2	B	M
NT50-SLA-40090	40	90	65	80	20	25	M16	1"-8 UNC
NT50-SLA-40090M	40	90	65	80	20	25	M16	M24

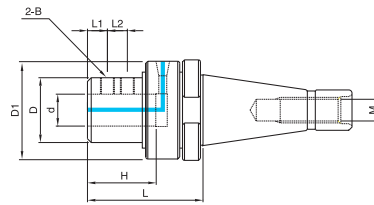


● DIN2080/NT EXT BASIC HOLDER Type

CODE NO.	D	d	L	B	M
NT40-ETA-22040	40	22	40	MTB-10145	5/8-11 UNC
NT40-ETA-28045	50	28	45	MTB-12175	
NT40-ETA-36065	63	36	65	MTB-16225	
NT50-ETA-28055	50	28	55	MTB-12175	1"-8 UNC
NT50-ETA-36060	63	36	60	MTB-16225	
NT50-ETA-45060	80	45	60	MTB-16260	
NT40-ETA-22040M	40	22	40	MTB-10145	M16
NT40-ETA-28045M	50	28	45	MTB-12175	
NT40-ETA-36065M	63	36	65	MTB-16225	
NT50-ETA-28055M	50	28	55	MTB-12175	M24
NT50-ETA-36060M	63	36	60	MTB-16225	
NT50-ETA-45060M	80	45	60	MTB-16260	

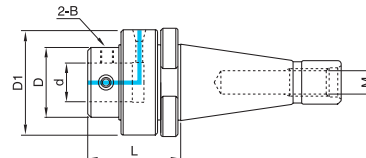
BASIC HOLDER

NT-OMS/NT-OME



● DIN2080/NT SIDE LOCK OIL FEED Type

CODE NO.	d	L	D	D1	H	L1	L2	B	M
NT40-OMS-20090	20	90	50	78	50	20	—	M12	5/8-11 UNC
NT40-OMS-25105	25	105	50	78	60	20	20	M12	
NT40-OMS-32110	32	110	65	88	70	20	20	M14	
NT50-OMS-20090	20	90	50	78	50	20	—	M12	1"-8 UNC
NT50-OMS-25105	25	105	50	78	60	20	20	M12	
NT50-OMS-32105	32	105	65	98	70	20	20	M14	
NT50-OMS-40120	40	120	65	98	80	20	25	M16	
NT50-OMS-50145	50	145	90	123	90	35	35	M20	
NT40-OMS-20090M	20	90	50	78	50	20	—	M12	M16
NT40-OMS-25105M	25	105	50	78	60	20	20	M12	
NT40-OMS-32110M	32	110	65	88	70	20	20	M14	
NT50-OMS-20090M	20	90	50	78	50	20	—	M12	M24
NT50-OMS-25105M	25	105	50	78	60	20	20	M12	
NT50-OMS-32105M	32	105	65	98	70	20	20	M14	
NT50-OMS-40120M	40	120	65	98	80	20	25	M16	
NT50-OMS-50145M	50	145	90	123	90	35	35	M20	

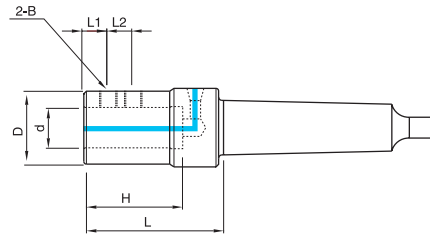


● DIN2080/NT EXT MODULAR OIL FEED Type

CODE NO.	d	L	D	D1	B	M
NT40-OME-22075	22	75	50	78	MTB-10145	5/8-11 UNC
NT40-OME-28080	28	80	50	78	MTB-12175	
NT40-OME-36090	36	90	65	88	MTB-16225	
NT50-OME-22080	22	80	50	78	MTB-10145	1"-8 UNC
NT50-OME-28080	28	80	50	78	MTB-12175	
NT50-OME-36090	36	90	65	98	MTB-16225	
NT50-OME-45090	45	90	80	115	MTB-16260	
NT40-OME-22075M	22	75	50	78	MTB-10145	
NT40-OME-28080M	28	80	50	78	MTB-12175	M16
NT40-OME-36090M	36	90	65	88	MTB-16225	
NT50-OME-22080M	22	80	50	78	MTB-10145	M24
NT50-OME-28080M	28	80	50	78	MTB-12175	
NT50-OME-36090M	36	90	65	98	MTB-16225	
NT50-OME-45090M	45	90	80	115	MTB-16260	

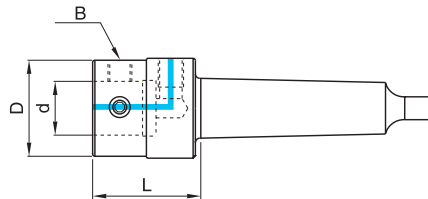
BASIC HOLDER

MT-SLA/MT-ETA



● DIN228B/MT SIDE LOCK Type

CODE NO.	d	L	D	H	L1	L2	B
MT4-SLA-32105	32	105	65	70	20	20	M14
MT4-SLA-40105	40	105	65	80	20	25	M16
MT5-SLA-32105	32	105	65	70	20	20	M14
MT5-SLA-40105	40	105	65	80	20	25	M16
MT5-SLA-50130	50	130	90	90	35	35	M20

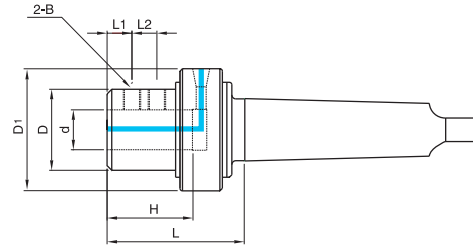


● DIN228B/MT EXT BASIC Type

CODE NO.	D	d	L	B
MT4-ETA-22045	40	22	45	MTB-10145
MT4-ETA-28060	50	28	60	MTB-12175
MT4-ETA-36065	63	36	65	MTB-16225
MT5-ETA-22045	40	22	45	MTB-10145
MT5-ETA-28060	50	28	60	MTB-12175
MT5-ETA-36065	63	36	65	MTB-16225
MT5-ETA-45075	80	45	75	MTB-16260
MT6-ETA-36065	63	36	65	MTB-16225
MT6-ETA-45075	80	45	75	MTB-16260

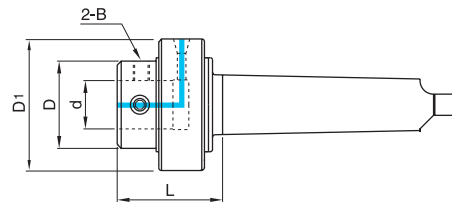
BASIC HOLDER

MT-OMS/MT-OME



● DIN228B/MT SIDE LOCK OIL FEED Type

CODE NO.	d	L	D	D1	H	L1	L2	B
MT4-OMS-20080	20	80	50	78	50	20	-	M12
MT4-OMS-25095	25	95	50	78	60	20	20	M12
MT4-OMS-32100	32	100	65	88	70	20	20	M14
MT5-OMS-20080	20	80	50	78	50	20	-	M12
MT5-OMS-25095	25	95	50	78	60	20	20	M12
MT5-OMS-32100	32	100	65	88	70	20	20	M14
MT5-OMS-40110	40	110	75	98	80	20	25	M16
MT5-OMS-50140	50	140	90	123	90	35	35	M20
MT6-OMS-32105	32	105	65	88	70	20	20	M14
MT6-OMS-40120	40	120	75	98	80	20	25	M16
MT6-OMS-50140	50	140	90	123	90	35	35	M20



● DIN228B/MT EXT MODULAR OIL FEED Type

CODE NO.	d	L	D	D1	B
MT4-OME-22065	22	65	50	78	MTB-10145
MT4-OME-28075	28	75	50	78	MTB-12175
MT4-OME-36080	36	80	65	88	MTB-16225
MT5-OME-22065	22	65	50	78	MTB-10145
MT5-OME-28075	28	75	50	78	MTB-12175
MT5-OME-36080	36	80	65	88	MTB-16225
MT5-OME-45085	45	85	80	115	MTB-16260
MT6-OME-22070	22	70	50	78	MTB-10145
MT6-OME-28075	28	75	50	78	MTB-12175
MT6-OME-36085	36	85	65	88	MTB-16225
MT6-OME-45085	45	85	80	115	MTB-16260



 **KoreaTechnics Ltd.**
HIGH SPEED CUTTING TOOLS